

Molecular POCT Rapid-PCR

RAPi-



Compact Size • Light Weight • Easy to Carry

CE IVD

ISO
13485:2016

ISO
9001:2015

GMP
Quality

GENES2me[®]
DX

Revolutionary Point of Care Testing Solution which does not require any special lab environment or additional equipment

Standalone Operation with Direct Connectivity to Printer, Barcode Scanner & LIS



Thermal Printer



Barcode Reader



- Delivers Result Interpretation as Positive/ Negative along with CT values
- Highly Accurate Fluorescent probes based detection method which supports One-step PCR Method for different applications

RAPI-Q HT SPECIFICATIONS			
Size	180x295x245 mm	Transportation & Storage Temperature	-20~55°C
Weight	11KG	Sample Capacity	32
Power Supply	220V	Applicable consumables	Dedicated Consumables
Communication Interface	USB 2.0	Temperature Range	0~100°C
Operating Environment Temperature	18~35°C	Temperature Accuracy	± 0.25°C
Sensitivity	1 Copy	Maximum Ramp Rate	8°C/s
Instrument Noise Level	<65dB	System Startup time	<30 seconds

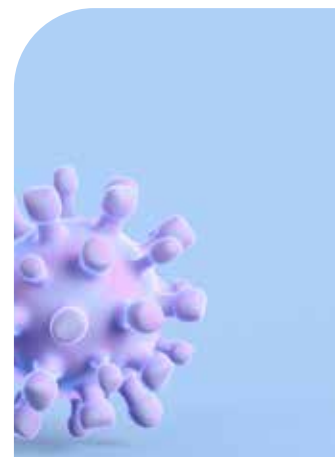


4 Channels & Double 16-Well Blocks Design, can run two different programs at the same time

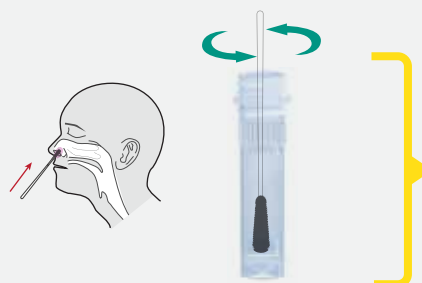
APPLICATIONS

- On Site emergency testing of COVID-19, HPV, TB and other Infectious diseases
- Clinical medical testing to develop various diagnostic reagents and POC emergency detection on this platform
- PCR Technology Development and Application Tools for Research Institutes
- Fast & efficient PCR experiments to improve the efficiency and level of scientific research

3 Easy Steps to Result



1 Sample Preparation



2 Reaction Setup



3 Instrument Run



Result with Automated Report



Compact & Innovative Rapid POC Solution

Pipette free operation which enables even semi skilled person to run the test.

FEATURES :

- Four channel- Eight well Block Design
- Capable of working with Car Battery/ Lithium Battery- especially suitable for quick inspection & field inspections
- Direct connectivity with Portable handheld devices
- Constant Current Circuit, High Temperature control Accuracy
- Powerful Software Analysis Function- can perform quantitative analysis, melting curve analysis, genotyping etc.
- Adopting Side Scan Technology- the detection distance is short, and the fluorescence collection signal is stable.
- Protection Functions- Over current, Over- temperature, power-off data self-recovery, etc.
- Environment Friendly- Holds advantage of energy saving, environmental protection and long service life.



RAPI-Q SPECIFICATIONS

Sample Capacity	8x0.2ml (8 well)
Consumable	Clear 0.2 ml PCR tube /8-tube strips
Reaction Volume	15-100µl
Temperature Range	Marlow customized Peltier allow 1.000.000 cycles
MAX. Ramp Rate	0-100°C (Resolution:0.1°C)
Temperature fluctuation	7°C/s
Uniformity	±0.1°C
Accuracy	±0.25°C
Hot Lid Temperature	±0.25°C
Temperature Control	30-110°C (Adjustable, default 105°C)
Excitation wavelength	Block/Tube
Emission wavelength	F1: 520-540nm, F2: 540-580nm, F3: 571-612nm, F4: 628-692nm
Factory Calibrated Dyes	F1: FAM/SYBR Green I, F2: HEX/VIC/JOE/TET, F3: ROX, F4: CY5
Excitation	460-628nm
Dynamic Range	1-10 ¹⁰ Copies
Sensitivity	1 copy
Date Export Formats	Report can be printed (optional USB thermal printer)
Printing	excel, cvs, txt
Communication	WIFI/USB2.0
Dimension	195x165x140 (LxWxH)
Net Weight	3KG
Voltage	220VAC, 50HZ
Power	DC15V 225W

RAPi-

*Point-of-Care
RT-PCR device*



**Small and light (~3 kg),
Easy to carry**

**Can even work with Car
battery/Lithium battery**

**Direct connectivity with
Portable handheld devices**

APPLICATIONS

- Intended solution for rapid detection at Health clinics, Blood Banks, Research laboratory, Hospitals and Airports.
- Ideal for detection of Tuberculosis, HPV, 3H (HIV, HCV & HBV), Tropical Fever, STIs & Respiratory diseases at remote areas
- Compatible for 50+ lyophilized room temperature stable disease detection kits.
- High-sensitivity, superior performance and stable detection.
- Provides Software driven automated analysis, interpretation and reports.



Robust, Compact & Light Weight DNA/RNA Extraction System *Ideal for Point-of-Care Testing Purpose*

RAPi-Σ 16



Automated Nucleic Acid Extraction System

FEATURES :

- Suitable for Extraction & Purification of various clinical samples
- Extraction time ~ 15 minutes
- Light weight & One-fourth in size to available Nucleic acid extractor in the Market
- Temperature uniformity & accurate controls
- High Sensitivity with Precise mechanical movement
- Magnetic Bead based method with a high Recovery Rate of Magnetic Beads >98%
- Powerful application to efficiently meet different reagent requirements

One Unique Kit Solution for Isolation of Nucleic Acids from different biological sample types

Offers optimized and user friendly protocol for Isolation of pure, intact nucleic acids from a variety of biological samples.



- Whole Blood
- Saliva
- Nasopharyngeal/ Oropharyngeal swabs
- Plasma/Serum
- Urine
- Other body fluids

Features of Rapi-Q & Rapi-Q HT Point of Care Testing Solution



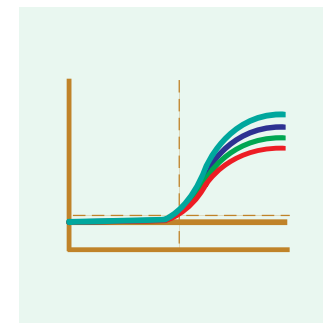
From Direct Samples to Results in **30-45 Minutes**



Pipette Free Operation
Eliminating the need of Technically Skilled Person



High Sensitivity (99%), Specificity and Accuracy in results



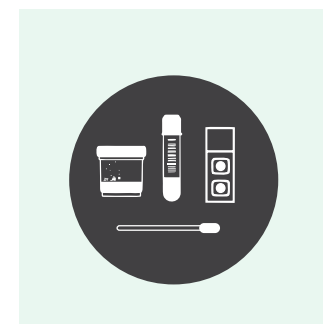
Four Targets Analysis
Allowing detection of multiple genes/ infections simultaneously



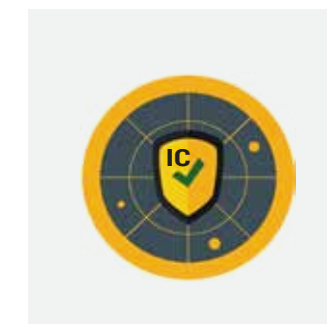
Lyophilized Format
Making the kit stable at Room Temperature for upto 12 months

Name	CT Value	Result
Sample 2	31.2	Positive
	29.8	
	30.6	

AI Driven Solution
Automated analysis, Interpretation & Reporting



Extensively Validated on wide variety of Clinical Samples



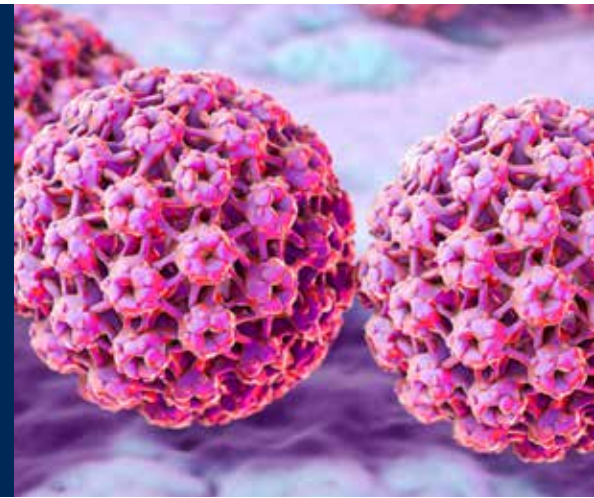
Parallel detection of Target with **Endogenous Internal Control**



Ideal for **Testing at Public Places** with confined space

HPV-Q

Multiplex Real Time PCR Kit



Human papillomavirus infection (HPV infection) is caused by a DNA virus from the Papillomaviridae family leading to major health problems, including genital warts and cancers.

High Sensitivity and Specificity : $\geq 99\%$

Faster Results

Sample Source

Vaginal/ Cervical Swab, Urine, Prostatic Fluid & Pap Smear

Qualitative screening of High Risk Genotypes

- Allows differential identification of 14 High- risk HPV genotypes: HPV 16, 18, 31, 33, 35, 39, 45, 51, 52, 56, 58, 59, 66, 68
- Separate dyes for following:
 - HPV 16 (Hex)
 - HPV 18 (Rox)
 - Rest of HPV genotypes (FAM)
 - Endogenous control (Cy5)

No Cross Reactivity with other pathogens

Complete testing solution for Tuberculosis

- Detection of *M. tuberculosis* using Taqman chemistry
- No cross reactivity with other pathogens

TBfind

TB Comprehensive
Real Time PCR Kit

- Allows Simultaneous detection of MTB & MDRTB.
- Targets Covered: IS6110, MPT64, rpoB, katG, inhA genes
- 16 mutations covered for isoniazid (INH) and rifampicin (RIF) resistant/sensitive tuberculosis

TBdteect

MTC-Q
Real Time PCR Kit

- Quantitative Detection of Mycobacterium tuberculosis infection
- Targets Covered: IS6110, MPT64 genes

MDRTB-Q

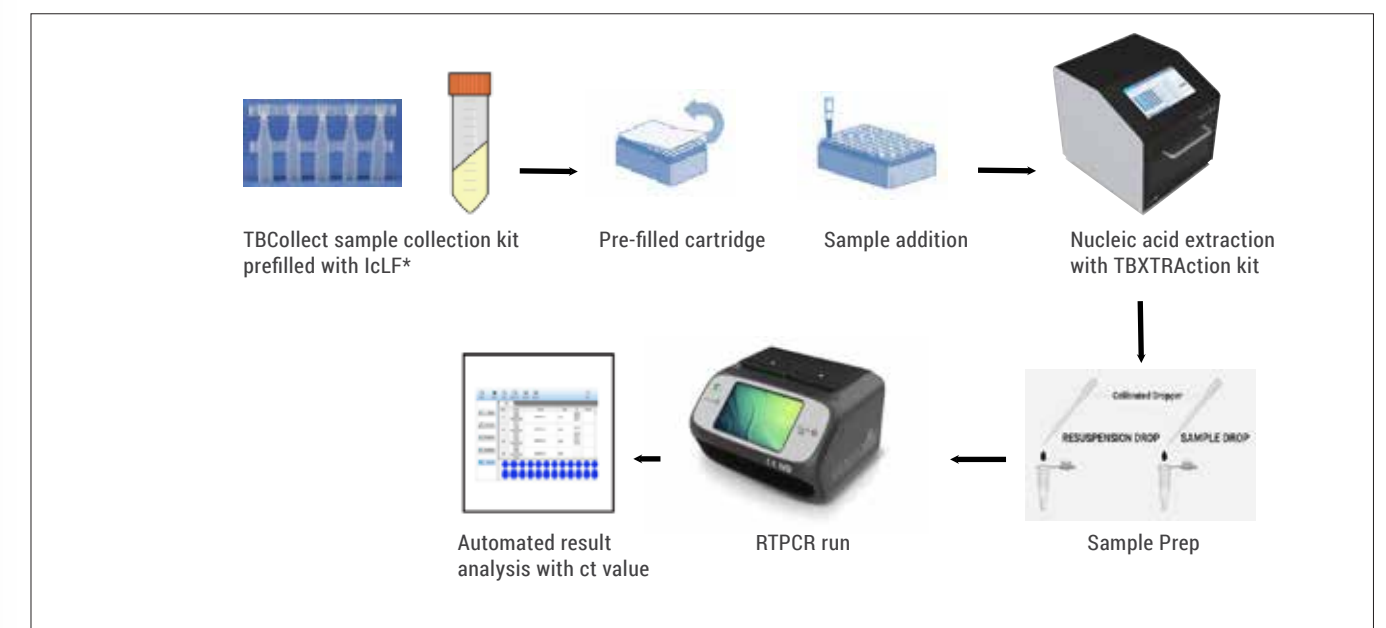
Real Time PCR Kit

- Detects Multidrug-resistant tuberculosis
- Identification of 2 first line drugs i.e. isoniazid (INH) and rifampicin (RIF) resistant/sensitive tuberculosis
- Targets Covered: rpoB, katG, inhA genes
- 16 mutations covered

Proprietary Buffer incorporated in the process to eliminate the virulence of TB in collected sample.



Process Flow



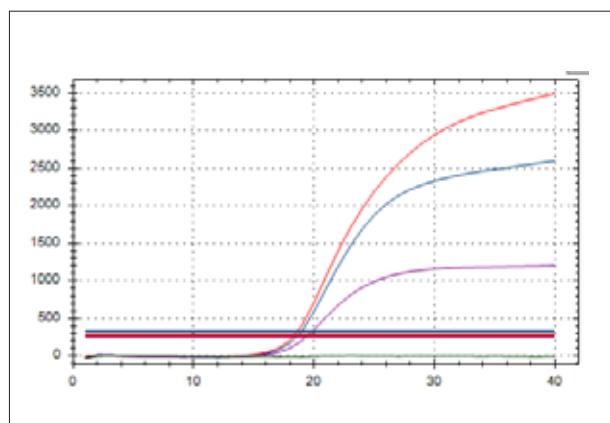
IcLF* - Inactivation cum Liquefaction buffer

Multiplex qualitative assay for simultaneous detection of Hepatitis C virus, Hepatitis B virus & Human Immunodeficiency virus in clinical samples

3HdTECT - Q

Multiplex Real Time PCR Kit

Individual target specific primers and probes have been designed for multiple virus detection in a single reaction through separate fluorescent channels



One step RTPCR kit with ready to use reagents specific for multiple targets based on Taqman chemistry.

Gene targets covered:

HCV specific: Poly gene
 HBV specific: SR gene
 HIV specific: pol, gag genes

One tube assay for differentiation & identification of HCV, HBV & HIV



Sample Source
Serum/ plasma



High Sensitivity and Specificity



Shelf Life: 12 months



Quick Turn Around Time

STI-Q Comprehensive Real Time PCR Kit is a multiplexed real-time PCR kit for the detection of 10 major Sexually Transmitted Infections (STIs) causative pathogens from clinical samples.

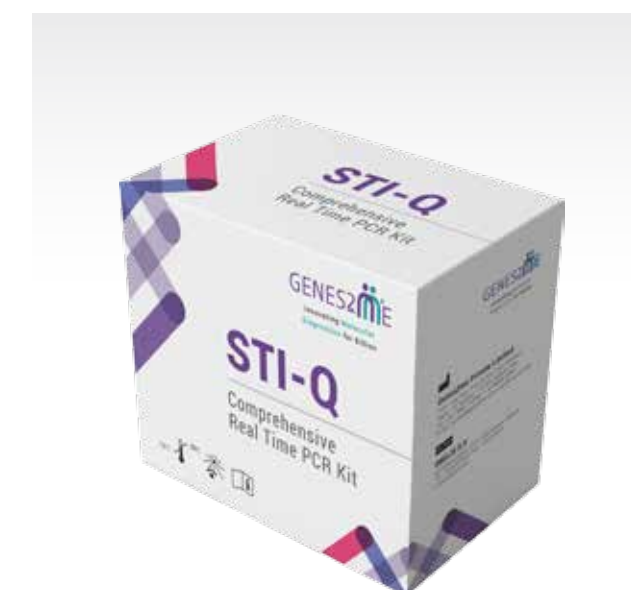
STI- Q

Comprehensive Real Time PCR Kit

The lyophilized ready mix contains reagents, enzymes, primer & probes for the specific amplification of STIs bacterial DNA along with Internal control.

- | | |
|----|-------------------------------|
| 1 | Mycoplasma Genitalium (MG) |
| 2 | Mycoplasma Hominis (MH) |
| 3 | Neisseria Gonorrhoeae (NG) |
| 4 | Trichomonas Vaginalis (TV) |
| 5 | Ureaplasma Urealyticum (UU) |
| 6 | Ureaplasma Parvum (UP) |
| 7 | Treponema Pallidum (TP) |
| 8 | Toxoplasma Gondii (TG) |
| 9 | Herpes Simplex Virus 1 (HSV1) |
| 10 | Herpes Simplex Virus 2 (HSV2) |

Qualitative detection of bacterial DNA fragment of 10 major causative pathogens related to STDs



High Sensitivity & Specificity



Quick Turn Around Time

Broad Range of High Sensitivity Kits :

COVID Detection

- COVIDtect Multiplex RT PCR Kit for COVID-19 **EF***
- Rapi-Q Multiplex Real Time PCR Kit for COVID-19
- COVFlu-ONE STEP RT-PCR Kit **EF***
- CoVFlu-II ONE STEP RT-PCR Kit **EF***

Mycobacterium Tuberculosis Detection

- MTC-Q Real-Time PCR Kit (**TBdect**)
- TB Comprehensive Real Time PCR Kit (**TBfind**)
- MTB-NTM Multiplex Real Time PCR Kit (**TBdect Advanced**)
- MDRTB-Q Real Time PCR Kit

Respiratory Disease Diagnostic

- Influenza A/B-Q Real Time PCR Kit **EF***
- B. Pertussis-Q Real Time PCR Kit **EF***
- S. Pneumonia-Q Real Time PCR Kit **EF***
- M. Pneumonia-Q Real Time PCR Kit **EF***
- Measles-Q Real Time PCR Kit
- LP-MP Multiplex Real Time PCR Kit **EF***
- Adeno-Q Real Time PCR Kit **EF***
- MERS-Q Real Time PCR Kit **EF***
- RSV-Q Real Time PCR Kit **EF***
- ParaFlu-Q Real Time PCR Kit **EF***

Vector Borne Transmission Detection

- Dengue-Q Real Time PCR Kit
- Malaria-Q Real Time PCR Kit
- Chikungunya-Q Real Time PCR Test Kit
- Zika-Q Real Time PCR kit
- Y. Fever-Q Real Time PCR kit
- J. Encephalitis-Q Real Time PCR kit
- W. Nile-Q Real Time PCR kit
- Para-Q Multiplex Real Time PCR kit
- Para2-Q Multiplex Real Time PCR kit



Other Infectious Diseases

- Human Papilloma Virus (HPV)-Q Real Time PCR Kit
- H. Pylori-Q Real Time PCR Kit
- BK-Q Real Time PCR Kit for BK virus
- EBV-Q Real Time PCR Kit
- Nipah-Q Real Time PCR Kit **EF***
- Rota-Q Real Time PCR Kit
- VZV-Q Real Time PCR Kit
- Human Parvovirus (B19)-Q Real Time PCR Kit
- C. Albicans (CA)-Q Real Time PCR Kit
- EEC-Q Real Time PCR Kit
- SS-Q Real Time PCR Kit

Reproductive Health

- N. Gonorrhoeae (NG)-Q RealTime PCR Kit
- T. Vaginalis (TV)-Q Real Time PCR Kit
- U. Urealyticum-Q Real Time PCR Kit
- M. Hominis (MH)-Q Real Time PCR Kit **EF***
- Syphilis-Q Real Time PCR Kit
- STI-Q Comprehensive Real Time PCR Kit
- HSV-Q Real Time PCR Test Kit

Genetic Disorders

- YCM-Q Real Time PCR Kit
- SCA-Q Real Time PCR Kit
- BT-Q Real Time PCR Kit
- Thrombosis-Q Comprehensive Real Time PCR Kit
- DMD- Q Real Time PCR Kit

*(EF) Extraction Free Kits
Oncology assays coming soon



Genes2Me Pvt. Ltd.

1105, 11th Floor, Tower B, SAS Tower, Medicity, Sector - 38,
Gurgaon - 122 001, Haryana, India
Tel : + 91 18001 214030 / + 91 88000 23600
E-mail : contact@genes2me.com
www.genes2me.com

